



HILBERINKBOSCH
ARCHITECTEN

Sheepfold

384

Sheepfold

In the middle of the Netherlands lies a brick sheepfold that has fallen to ruin and is already mentioned in the oldest cadastral information of 1832. This sheepfold has a traditional rectangular plan with three-sided extended end gables and is the last of this type in this area.

From the end of the 19th century, sheepfolds fell into disuse with the use of artificial fertilisers and the reclamation of heathland, making sheep farming for manure no longer necessary. After serving as pigsties for some time, the sheepfolds lose their usefulness in agricultural operations and are demolished. Of this last sheepfold, a national monument that escaped total demolition, only parts of the brick outer walls remain.

The new owner decides to rebuild the characteristic building and thereby preserve this heritage for the future. Since use is the best form of preservation, the new sheepfold will be converted into a recreation house. To this end, the wooden facade parts will be opened up with glass and wooden slats. Behind the existing stable doors, large windows will be installed.

Modern timber construction techniques are used to rebuild the old trusses and the rafter roof. Space has been created between the trusses for a bedroom and bathroom without affecting the characteristic contours of the sheepfold. In the interior, the visible timber construction determines the atmosphere and the spaciousness of open sheepfold is guaranteed.



The latent contour of the historic volume has re-emerged and stands out against sky and landscape, returned from the past. The Dutch landscape has once again gained an authentic building where people can have a good time.



Recreational house

Client:
private client

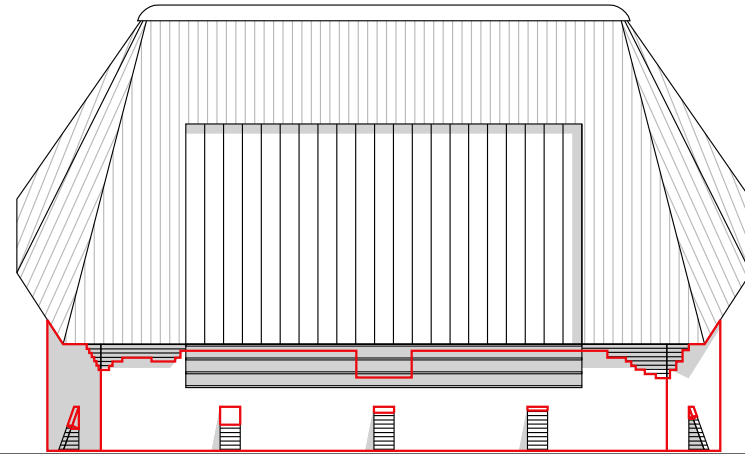
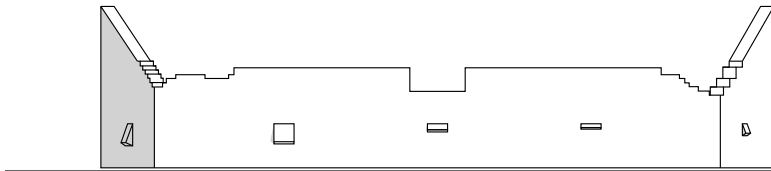
2023

Team: Annemarijke Hilberink, Geert Bosch,
Frenske Wijnen, Jurre Mattheeuwse

Photography René de Wit, foto drone: Cheese Works



Sheepfold historical image



ruin Sheepfold 2021



rebuild Sheepfold 2023



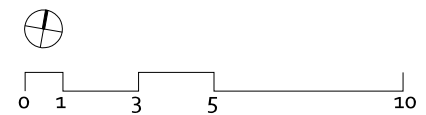
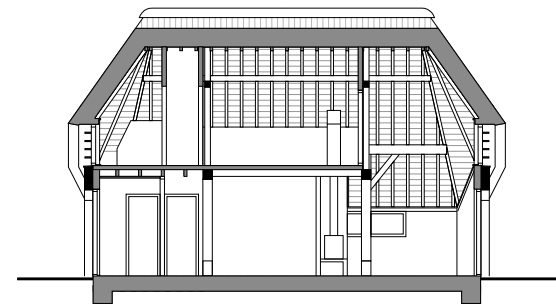
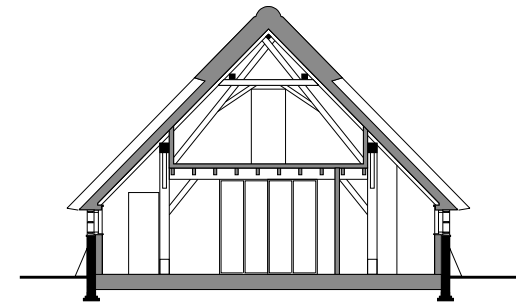
view on the Sheepfold from the road

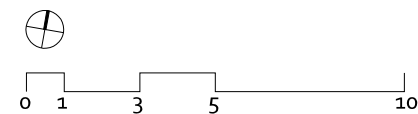
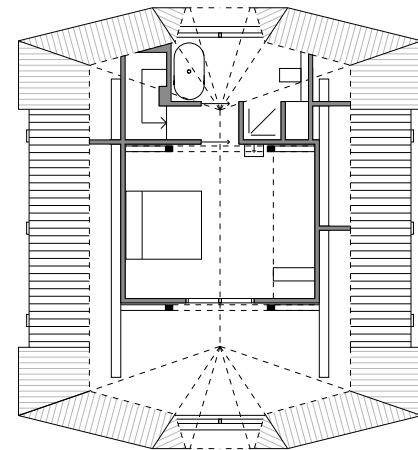
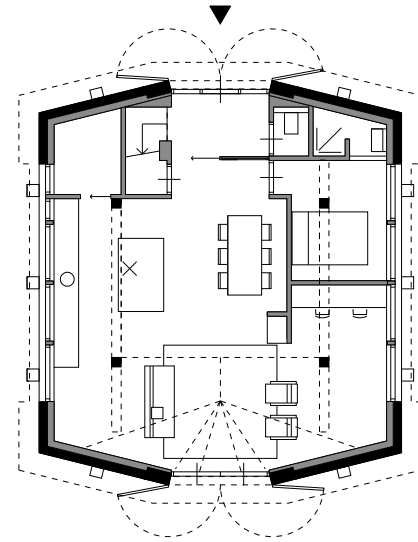
HILBERINKBOSCH architecten



view on the Sheepfold from the meadow

HILBERINKBOSCH architecten







the old trusses and the rafter roof have been rebuilt using modern timber construction techniques

HILBERINKBOSCH architecten



the original wooden façade parts have been opened up with glass and wooden slats; large windows have been placed behind the existing stable doors

HILBERINKBOSCH architecten



in the interior, the visible wood construction defines the atmosphere and the spaciousness of 'open sheepfold' is guaranteed

HILBERINKBOSCH architecten





