



HILBERINKBOSCH
ARCHITECTEN

Living on the Peelrand fault Nistelrode

315

Living on the Peelrand fault

Just outside the village, in the grassy agricultural countryside, a new estate is being developed. Through the placement of new wooded banks and groves, a coulisse landscape will be formed, creating smaller enclosed landscape rooms. Water that bubbles up here on the Peelrand fault is collected in ponds and water courses that meander through the rough herb-rich vegetation.

A new family house will be designed in one of these new landscape chambers. The orientation towards the sun and the location and view in the landscape chamber is leading in the design. By using only natural and dark materials, the house tries to blend into its natural surroundings.

The house is constructed of masonry disks in a dark brick placed at right angles to each other. The crossed stacking creates private spaces all around and continues the coulisse effect. The stacking also creates separation and privacy, giving the house a more closed character towards the public road and the neighbours.

The bedroom floor is half sunk into the ground and oriented from east to west. The long sides of this volume are bordered by closed brick walls and glass heads. The master bedroom is oriented towards the morning sun and has an adjacent patio whose edges undulate upwards. Planted with tropical-looking plants, this has

created an enclosed space where you can be somewhere else for a while.

The entrance to the house is in the closed façade of this sunken wing.

A lower brick wall perpendicular to this wing carries the upper floor. This residential wing is oriented from south to north and collapses at the front, giving security to the entrance and also forming a canopy for the parked cars. In this lifted living wing lies the large living room. A robust fireplace element divides the space into two atmospheres: an open seating area that looks out over the dining room into the garden, and an enclosed TV room where the evening sun enters through large west-facing windows.

As an intermediary between the bedroom and living wing, the kitchen - and dining area is laid at ground level, so that these spaces have a direct contact with the terraces in the landscape. With the sun at your back, you look at the sunlit wooded banks.

One of the brick walls extends further into the garden and forms the back wall of the pool house. A beautiful swimming pond, fed by water bubbling up from the peel edge break, reinforces this line. Rich planting in the pond surrounding the swimming area, connects the pond to the wildflower garden that flows around the house. Through the geometry of the house, the fly-out walls, bordered by wild vegetation that overflows into the

herb-rich grassland landscape, an environment is created that plays with light, views and sightlines and where inside and outside are in continuous dialogue.

*

the Peelrand fault is a geological fault line in the De Peel area in the south of the Netherlands



Residential house

Client::
private

2024

Team:

Landscape architect

Photography

Annemarijken Hilberink, Geert Bosch,
Joost Kolk, Jurje Mattheeuwse

Bureau Oslo

René de Wit



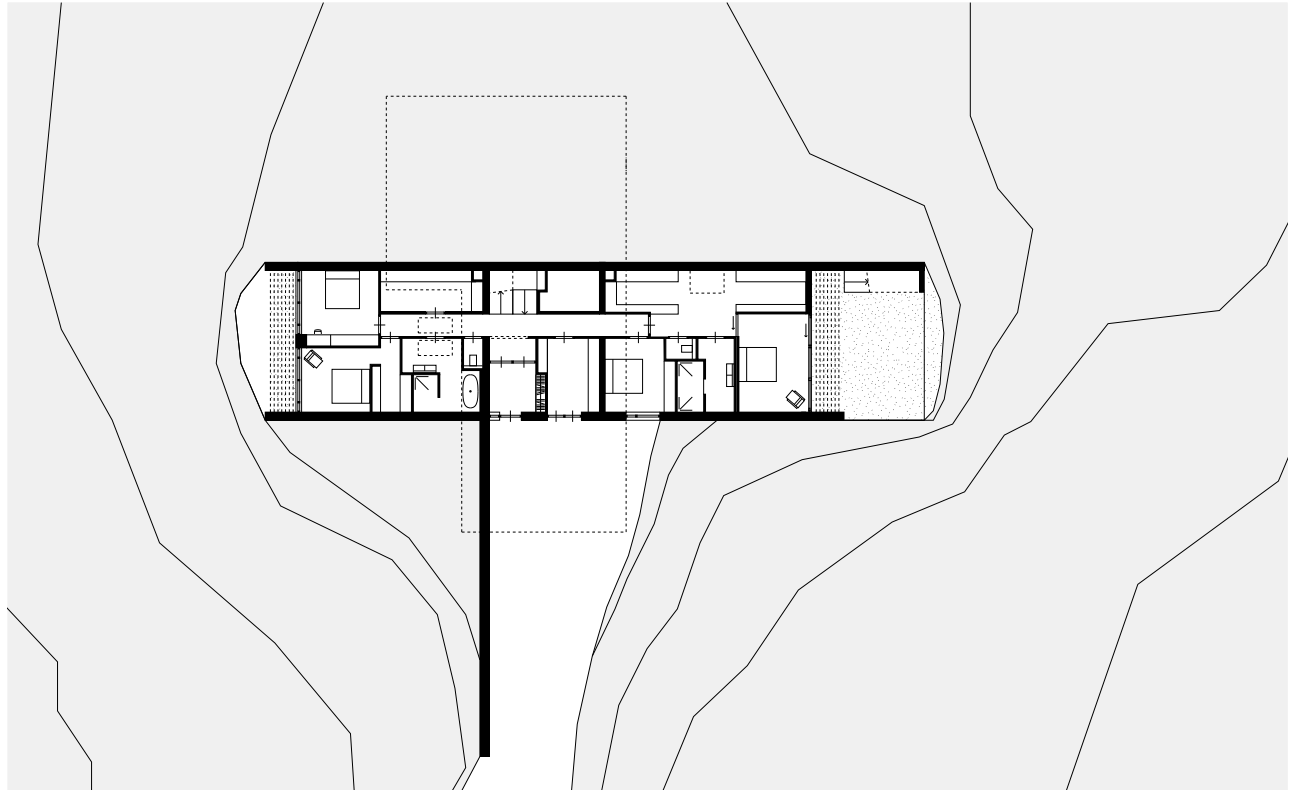
on arrival, the house is salvaged in flora

HILBERINKBOSCH architecten



the house has a closed character towards the public road and neighbours

HILBERINKBOSCH architecten



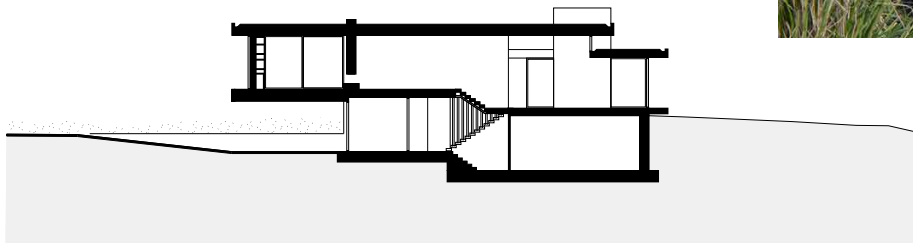
basement, sunken bedroom wing and entrance

HILBERINKBOSCH architecten



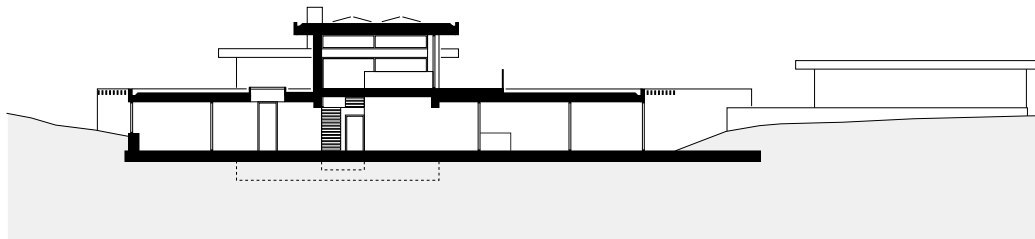
the house is constructed of masonry discs in a dark brick placed at right angles to each other, the crossed stacking creates private spaces all around and continues the coulisse effect

HILBERINKBOSCH architecten



0 1 3 5 10

cross-section north-south



cross-section east-west





the bedroom floor, half sunken into the ground, is oriented from east to west

HILBERINKBOSCH architecten



the master bedroom is oriented towards the morning sun and has an adjoining patio

HILBERINKBOSCH architecten



the patio to the master bedroom is overgrown with tropical-looking plants, a private space that lets you be somewhere else for a while

HILBERINKBOSCH architecten



the front of the pool house and the beautiful swimming pond, fed by water bubbling up from the Peelrand fault

HILBERINKBOSCH architecten



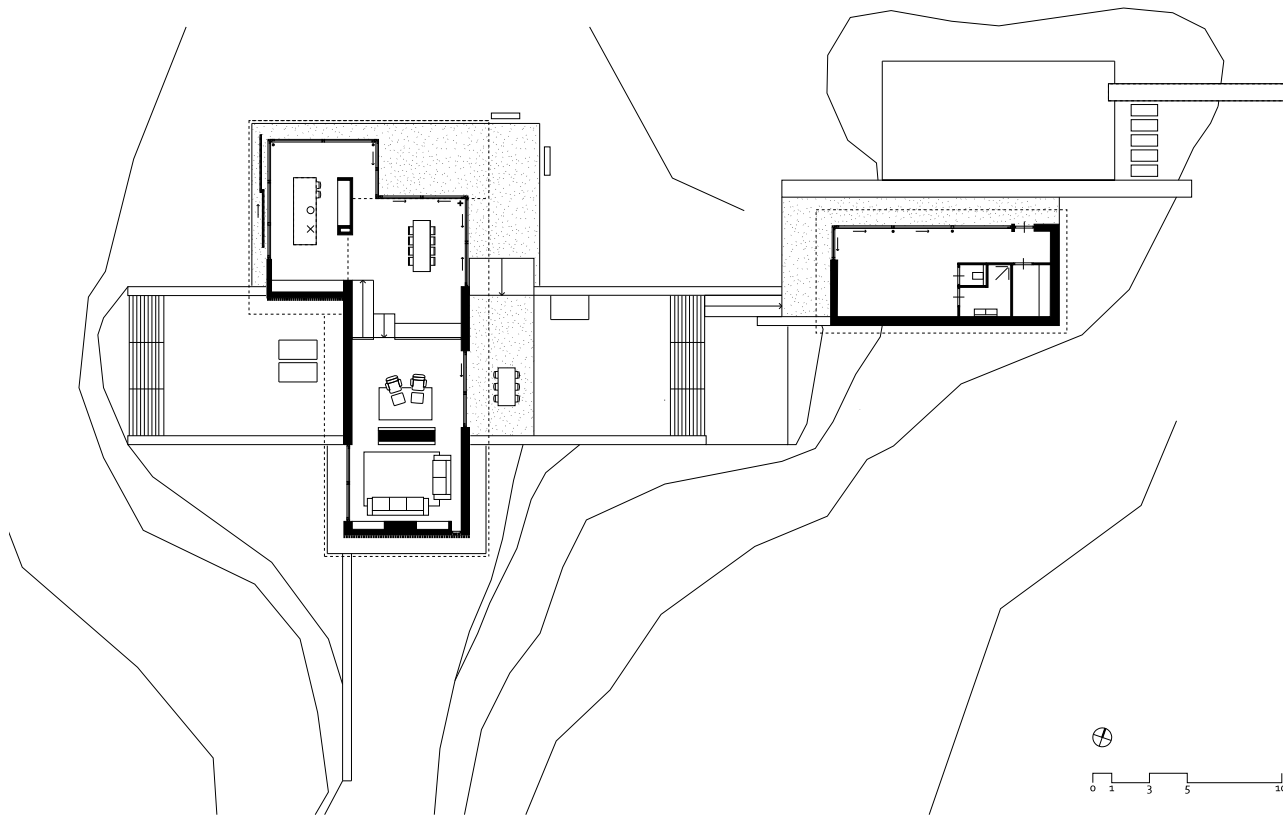
rich planting in the pond around the swimming area, connects the pond to the wildflower garden surrounding the house

HILBERINKBOSCH architecten



the orientation to the sun, and the location and view of the landscape room is guiding in the design

HILBERINKBOSCH architecten



ground floor, lifted residential wing

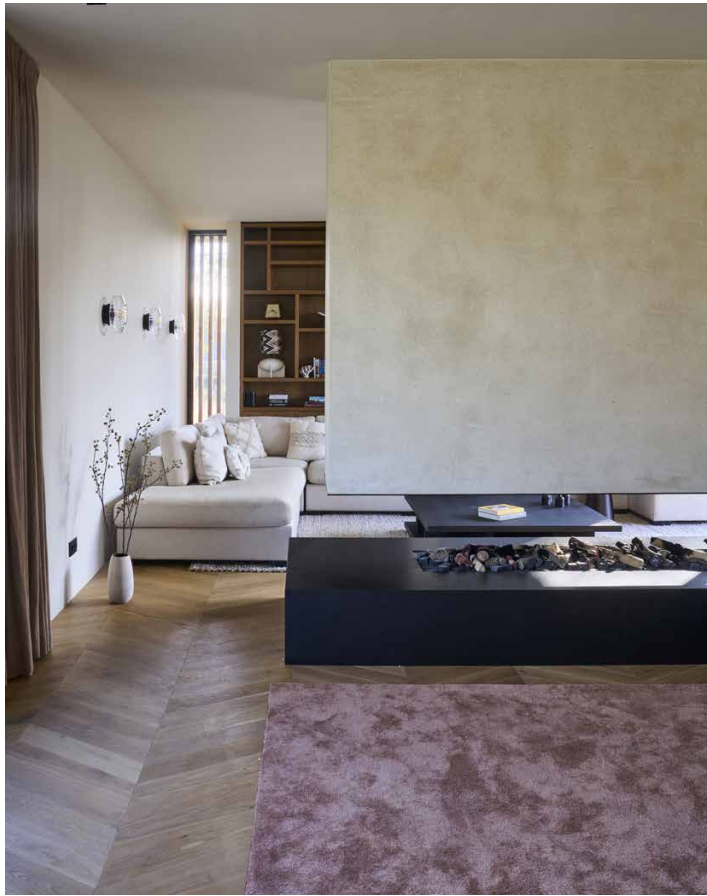


designed staircase connects the two wings



as an intermediary between the bedroom and living wing, the kitchen and dining area are placed at ground level, so that these spaces are in direct contact with the terraces in the landscape





a robust fireplace element divides the raised living space into two atmospheres: an open sitting area and an enclosed TV room where the evening sun enters through large west-facing windows

HILBERINKBOSCH architecten

